

ADAS301: State selective charge exchange data - graph and fit cross-section

The code interrogates state selective charge exchange cross-section files of type ADF01. Data may be extracted for capture to a selected n-, nl-or nlm-shell of a hydrogen-like or lithium-like receiving ion depending on the ADF01 file. The data may be interpolated using cubic splines to provide cross-sections at arbitrarily chosen impact energies. A minimax polynomial approximation is also made to the source data. The source and interpolated cross-section data are displayed and a tabulation prepared. The tabular and graphical output may be printed and include the minimax polynomial approximation.

Background theory:

The code allows display of the total, n-, nl, or nlm-shell charge exchange cross-sections depending on the data resolution of the input ADF01 file. Most files are at nl-shell resolution. The full prescription of the data sets are given in the *appxa-01*.

For a specified relative collision energy E_i belonging to the tabulation, let the total cross section be $\sigma_{tot}(E_i)$ and the n-shell cross-sections be $\sigma_n(E_i)$. The latter are tabulated for $n_{min} \leq n \leq n_{max}$ for some n_{min} and n_{max} . Data can be displayed for $n \geq n_{max}$. To achieve this the program uses an extrapolation of the form

$$\sigma_n(E_i) = (n_{max}/n)^{\beta(E_i)} \sigma_{n_{max}}(E_i) \quad 4.1.1$$

The parameter $\beta(E_i)$ is deduced from $\sigma_{n_{max}-1}(E_i)$ and $\sigma_{n_{max}}(E_i)$. It is tabulated in the data set. The $\sigma_n(E_i)$ are normalised to the total cross-section so that

$$\sigma_{tot}(E_i) = \sum_{n=n_{min}}^{\infty} \sigma_n(E_i) \quad 4.1.2$$

using the extrapolation equation 4.1.1 for $n \geq n_{max}$.

Explicit l-subshell cross-sections $\sigma_{nl}(E_i)$ are tabulated for $n_{min} \leq n \leq n_{max}$ and $0 \leq l \leq n-1$. In extrapolation there are two cases.

Case 1: No l subshell subdivision parameters are given in the ADF01 dataset.. It is assumed that the l distribution for $n > n_{max}$ is the same as for n_{max} so that

$$\sigma_{nl}(E_i) = \begin{cases} \sigma_{n_{max}l}(E_i)(\sigma_n(E_i) / \sigma_{n_{max}}(E_i)) & \text{for } l \leq n_{max} - 1 \\ 0 & \text{for } l \geq n_{max} \end{cases} \quad 4.1.3$$

Case 2: l subshell parameters are given in the the ADF01 dataset. The parameters are obtained as a fit to l- subshell cross-section data for a particular n-shell using the program ADAS107. The parameterisation identifies an l-type, parameter $ltyp(E_i)$ and an approximate l (non integral) at which the cross-section behaviour changes from rising at low l to falling at high l, parameter $xlcr(E_i)$. The behaviour is then given by

$$\sigma_{nl}(E_i) \sim \begin{cases} (2l+1)^{pl^2} & \text{for } l < xlcr \\ \exp(-(l-xlcr)^{pl^3}) & \text{for } l > xlcr \end{cases} \quad 4.1.4$$

The normalisation

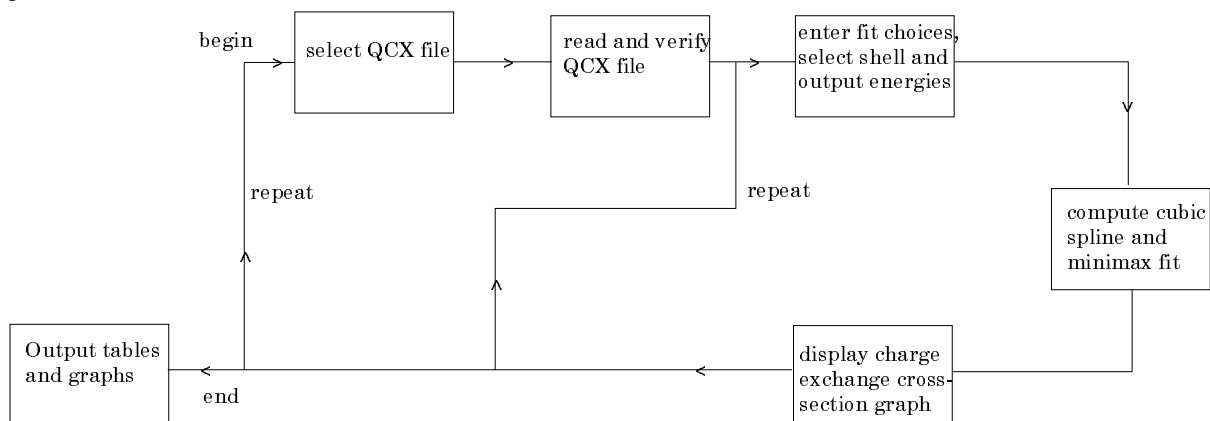
$$\sigma_n(E_i) = \sum_{l=0}^{n-1} \sigma_{nl}(E_i) \quad 4.1.5$$

is maintained while the sharpness of the switching between the two forms varies with the l-type. A detailed description is given in ADAS107.

Program steps:

These are summarised in figure 4.1.

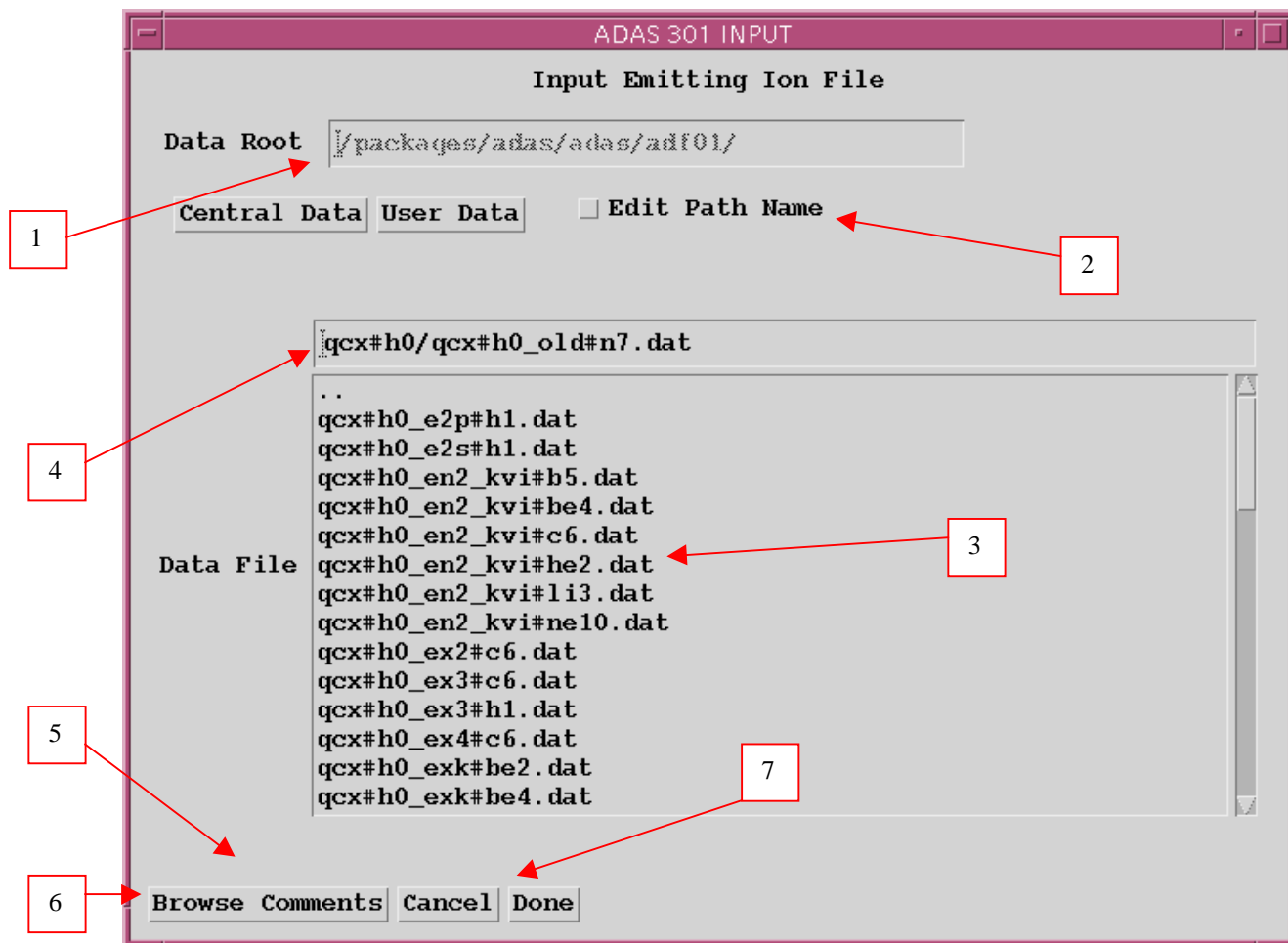
Figure 4.1



Interactive parameter comments:

ADAS301, which make use of data from archived ADAS datasets, initiates an interactive dialogue with the user in three parts, namely, input file selection, entry of user data and disposition of output.

The file selection window is shown below.

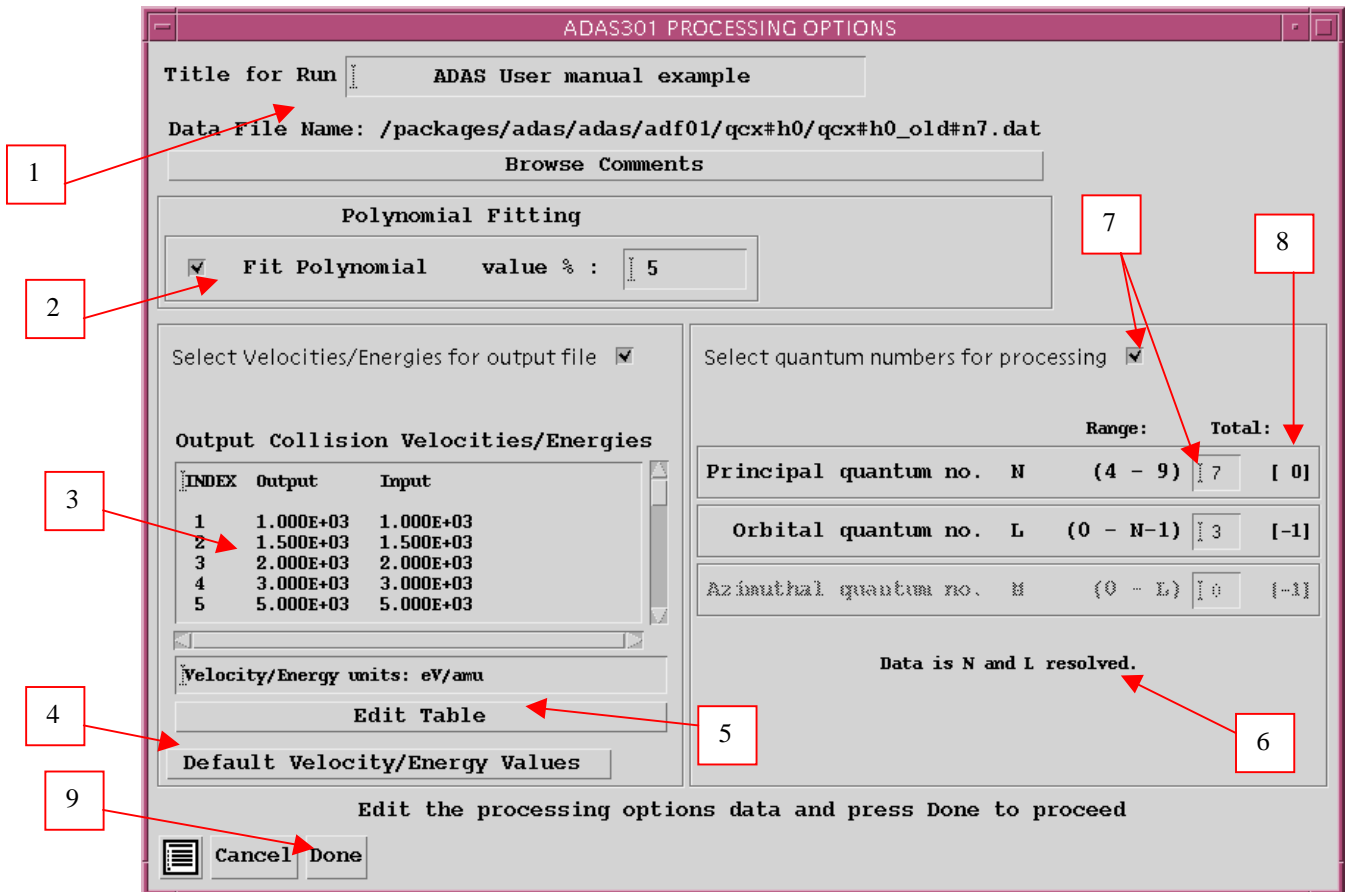


1. Data root shows the full pathway to the appropriate data subdirectories. Click the *Central Data* button to insert the default central ADAS pathway to the correct data type – ADF01 in this case. Note that each type of data is stored according to its ADAS data format (*adf* number). Click the *User Data* button to insert the pathway to your own data. Note that your data must be held in a similar file structure to central ADAS, but with your identifier replacing the first *adas*, to use this facility.
2. The Data root can be edited directly. Click the *Edit Path Name* button first to permit editing.
3. Available sub-directories are shown in the large file display window. There are a large number of these, stored by donor which is usually neutral but not necessarily so (eg. *qcx#h0*). The individual members are identified by the subdirectory name, a code and then fully ionised receiver (eg. *qcx#h0_old#c6.dat*). The data sets generally contain *nl*-resolved cross-section data but *n*-resolved and *nlm*-resolved are handled. Resolution levels must not be mixed in datasets. The codes distinguish different sources. The first letter *o* or the code *old* has been used to indicate that the data has been produced from JET compilations which originally had parametrised *l*-distribution of cross-sections. The *nl*-resolved data with such code has been reconstituted from them. Data of code *old* is the preferred JET data. Other sources codes include *ory* (old Ryufuku), *ool* (old Olson), *ofr* (old Fritsch) and *omo* (old molecular orbital). There are new data such as *kvi*.
4. Click on a name to select it. The selected name appears in the smaller selection window above the file display window. Then its sub-directories in turn are displayed in the file display window. Ultimately the individual datafiles are presented for selection. Datafiles all have the termination *.dat*.
5. Once a data file is selected, the set of buttons at the bottom of the main window become active.
6. Clicking on the *Browse Comments* button displays any information stored with the selected datafile. It is important to use this facility to find out what is broadly available in the dataset. The possibility of browsing the comments appears in the subsequent main window also.
7. Clicking the *Done* button moves you forward to the next window. Clicking the *Cancel* button takes you back to the previous window

The **processing options window** has the appearance shown below

1. An arbitrary title may be given for the case being processed. For information the full pathway to the dataset being analysed is also shown. The button *Browse Comments* again allows display of the information field section at the foot of the selected dataset, if it exists.
2. The output data extracted from the datafile, a ‘charge exchange cross-section’, may be fitted with a polynomial. This is as a function of relative collision energy per atomic mass unit (eV/amu). Clicking the *Fit Polynomial* button activates this. The accuracy of the fitting required may be specified in the editable box. The value in the box is editable only if the *Fit Polynomial* button is active
3. Your settings of collision velocity/energy (output) are shown in the display window. The velocity/energy values at which the charge exchange coefficients are stored in the datafile (input) are also shown for information. The program recovers the output velocities/energies you used when last executing the program.
4. Pressing the *Default Velocity/Energy values* button inserts a default set of velocities/energies equal to the input velocities/energies
5. The Velocity/Energy values are editable. Click on the *Edit Table* button if you wish to change the values. A ‘drop-down’ window, the ADAS Table Editor window: It follows the same pattern of operation as described in the *18nov-94* bulletin.

6. The specific cross-section data to be extracted is specified by the window to the right. The level or resolution of the data source is shown.
7. Activate the *Select quantum numbers for processing* button to allow new settings of these quantum numbers. The values in the three smaller windows become editable depending also on the resolution of the dataset. Note that the *Range* of the data in the dataset is displayed.
8. There are special codes to be used to obtain summed cross-sections over sub-quantum numbers. These are indicated in brackets under the *Total* column and should be entered into the editable window if required.

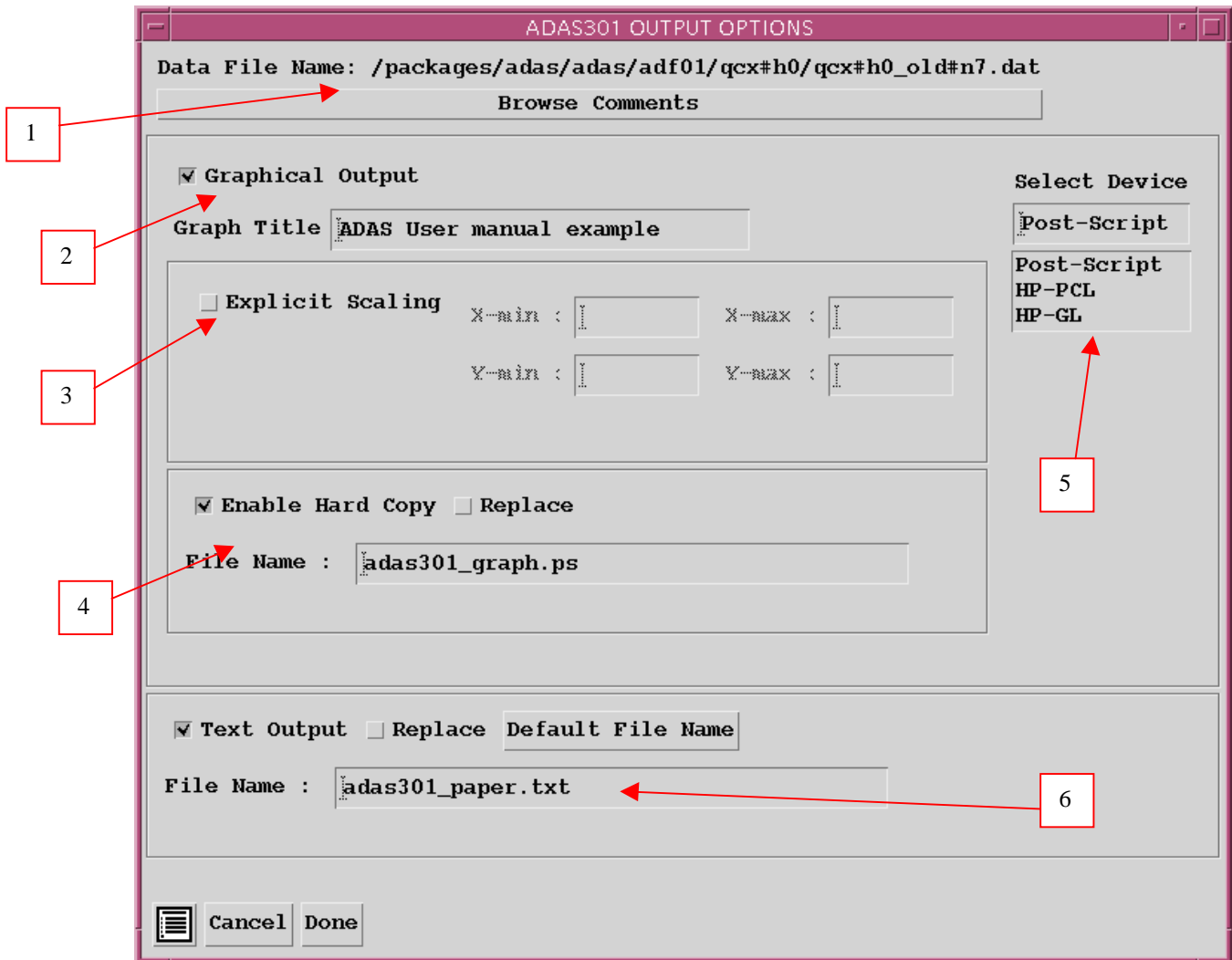


9. Clicking the *Done* button causes the next output options window to be displayed. Remember that *Cancel* takes you back to the previous window.

The **output options window** is shown below

1. As in the previous window, the full pathway to the file being analysed is shown for information. Also the *Browse comments* button is available.
2. Graphical display is activated by the *Graphical Output* button. This will cause a graph to be displayed following completion of this window. When graphical display is active, an arbitrary title may be entered which appears on the top line of the displayed graph.
3. By default, graph scaling is adjusted to match the required outputs. Press the *Explicit Scaling* button to allow explicit minima and maxima for the graph axes to be inserted. Activating this button makes the minimum and maximum boxes editable.

4. Hard copy is activated by the *Enable Hard Copy* button. The File name box then becomes editable. If the output graphic file already exists and the *Replace* button has not been activated, a 'pop-up' window issues a warning.
5. A choice of output graph plotting devices is given in the Device list window. Clicking on the required device selects it. It appears in the selection window above the Device list window.
6. The *Text Output* button activates writing to a text output file. The file name may be entered in the editable File name box when *Text Output* is on. The default file name 'paper.txt' may be set by pressing the button *Default file name*. A 'pop-up' window issues a warning if the file already exists and the *Replace* button has not been activated.



The **Graphical output window** is shown below

1. Printing of the currently displayed graph is activated by the *Print* button.

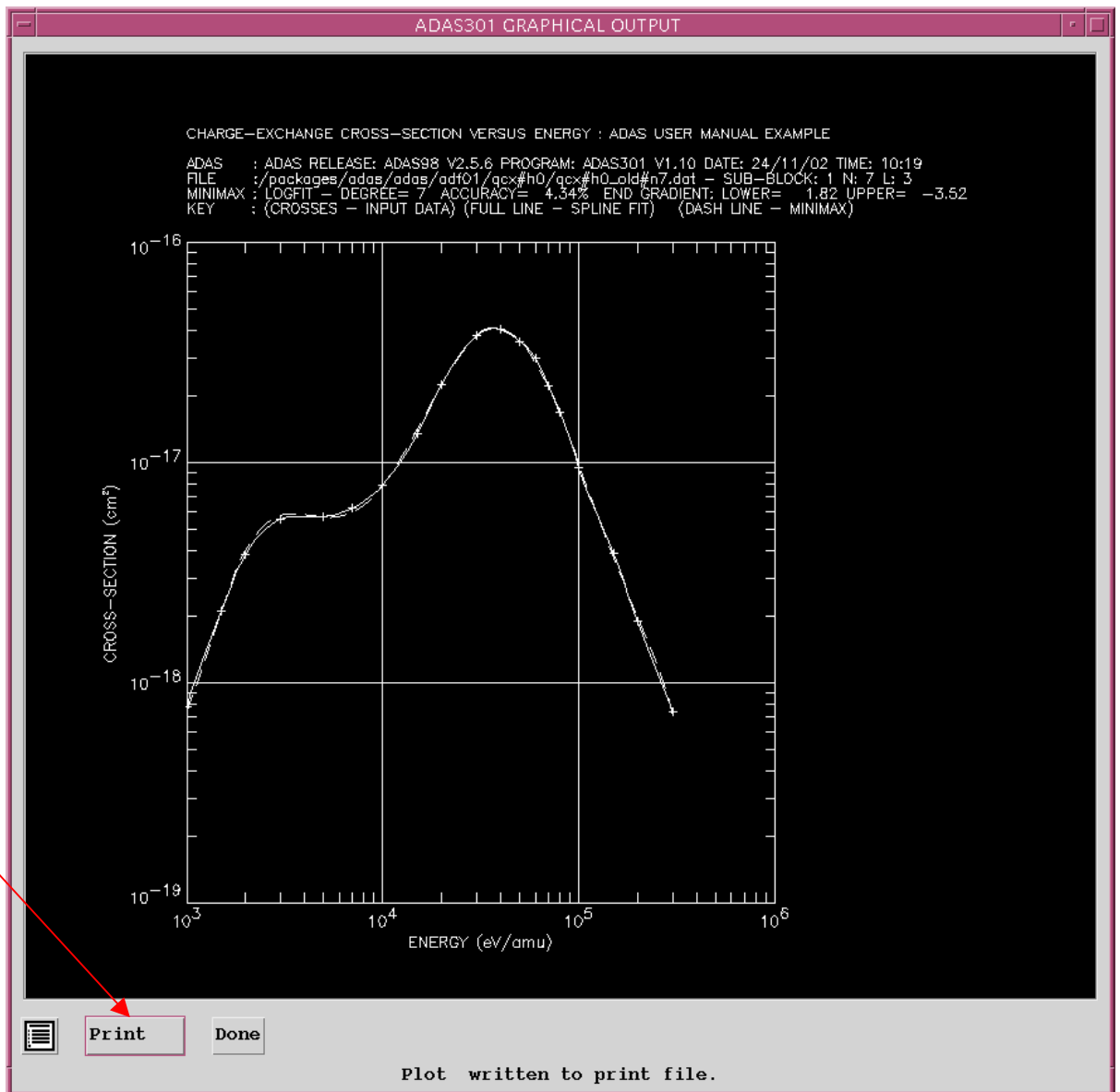


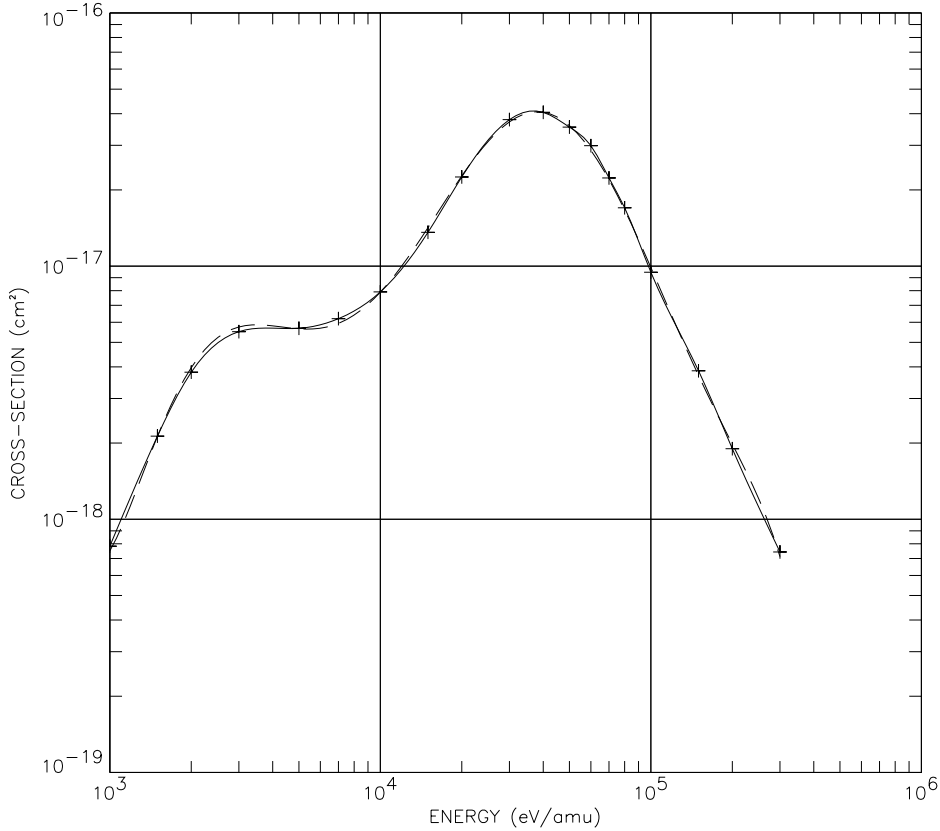
Illustration:

The output from the program is illustrated in figure 4.1a for capture by H⁺ from a deuterium beam atom in its ground state D⁰(1s), into the n=4 shell. Input values in the source data set are shown as crosses. The spline curve is the continuous line and the minimax polynomial fit is the dashed curve.

Figure 4.1a

CHARGE-EXCHANGE CROSS-SECTION VERSUS ENERGY : ADAS USER MANUAL EXAMPLE

ADAS : ADAS RELEASE: ADAS98 V2.5.6 PROGRAM: ADAS301 V1.10 DATE: 24/11/02 TIME: 10:19
 FILE : /packages/adas/adas/adf01/qcx#h0/qcx#h0_old#n7.dat - SUB-BLOCK: 1 N: 7 L: 3
 MINIMAX : LOGFIT - DEGREE= 7 ACCURACY= 4.34% END GRADIENT: LOWER= 1.82 UPPER= -3.52
 KEY : (CROSSES - INPUT DATA) (FULL LINE - SPLINE FIT) (DASH LINE - MINIMAX)



The tabular output is shown in table 4.1a. Output data which requires extrapolation beyond the range of the original data in the source ADF01 file are indicated by * when necessary. The rate coefficient is obtained from the cross-section by simply multiplying by the collision speed.

Table 4.1a

```

ADAS RELEASE: ADAS98 V2.5.6 PROGRAM: ADAS301 V1.10 DATE: 24/11/02 TIME: 10:19
***** TABULAR OUTPUT FROM CHARGE EXCHANGE CROSS-SECTION INTERROGATION PROGRAM: ADAS301 - DATE: 24/11/02 *****

-----
                        ADAS User manual example
-----

      CHARGE EXCHANGE CROSS-SECTIONS AS A FUNCTION OF ENERGY
-----
      DATA GENERATED USING PROGRAM: ADAS301
-----

/packages/adas/adas/adf01/qcx#h0/qcx#h0_old#n7.dat          - SUB-B
FILE IS L RESOLVED

PRINCIPAL QUANTUM N-SHELL = 7
ORBITAL QUANTUM L-SHELL = 3

-- ENERGY -- ----- VELOCITY ----- -- CROSS-SECTION -- -- RATE COEFFT
  eV/amu    at.units  cm/sec      cm**2      pi*(a0**2)  cm**3/sec
-----
  1.000D+03  2.008D-01  4.393D+07  7.830D-19  8.900D-03  3.440D-11
  1.500D+03  2.459D-01  5.380D+07  2.130D-18  2.421D-02  1.146D-10
  2.000D+03  2.840D-01  6.212D+07  3.810D-18  4.331D-02  2.367D-10
  3.000D+03  3.478D-01  7.609D+07  5.510D-18  6.263D-02  4.192D-10
  5.000D+03  4.490D-01  9.823D+07  5.680D-18  6.456D-02  5.579D-10
  7.000D+03  5.313D-01  1.162D+08  6.200D-18  7.048D-02  7.206D-10
  1.000D+04  6.350D-01  1.389D+08  7.910D-18  8.991D-02  1.099D-09
  1.500D+04  7.777D-01  1.701D+08  1.360D-17  1.546D-01  2.314D-09
  2.000D+04  8.980D-01  1.965D+08  2.250D-17  2.558D-01  4.420D-09
  3.000D+04  1.100D+00  2.406D+08  3.790D-17  4.308D-01  9.119D-09
    
```

5.000D+04	1.420D+00	3.106D+08	3.540D-17	4.024D-01	1.100D-08
6.000D+04	1.555D+00	3.403D+08	2.990D-17	3.399D-01	1.017D-08
7.000D+04	1.680D+00	3.675D+08	2.230D-17	2.535D-01	8.196D-09
8.000D+04	1.296D+00	2.929D+08	4.060D-17	4.004D-01	5.529D-09
1.000D+05	2.008D+00	4.393D+08	9.460D-18	1.075D-01	4.156D-09
1.500D+05	2.459D+00	5.380D+08	3.860D-18	4.388D-02	2.077D-09
2.000D+05	2.840D+00	6.212D+08	1.900D-18	2.160D-02	1.180D-09
3.000D+05	3.478D+00	7.609D+08	7.430D-19	8.446D-03	5.653D-10

 KEY: a0 => Bohr radius = 5.29177D-11 m

MINIMAX POLYNOMIAL - TAYLOR COEFTS: LOG10(X-SEC<cm**2>) vs. LOG10(ENGY<eV/amu>)

A(1) =	2.267736763D+04	A(2) =	-3.960306568D+04
A(3) =	2.930884365D+04	A(4) =	-1.192631460D+04
A(5) =	2.882343432D+03	A(6) =	-4.138118687D+02
A(7) =	3.268644382D+01	A(8) =	-1.096179853D+00

LOGFIT - DEGREE= 7 ACCURACY= 4.34% END GRADIENT: LOWER= 1.82 UPPER= -3.52

Notes: